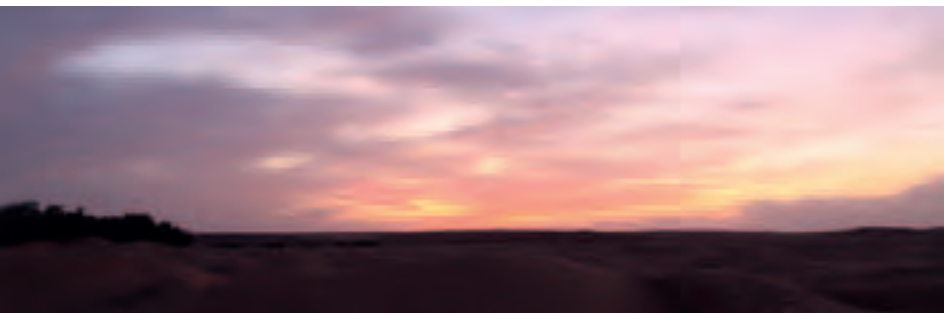
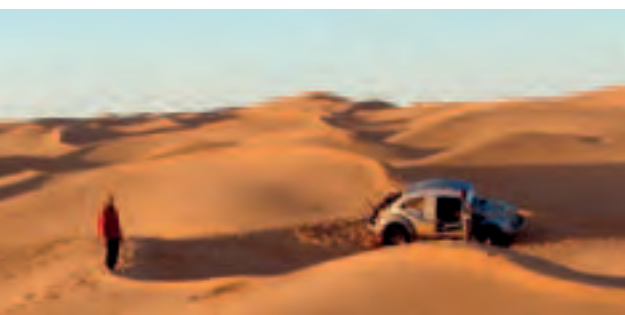




EICHOTT 2013

SAHARA RALLYE DE TUNISIE - time is ticking





A great adventure for rookies and demanding motorsport for advanced drivers – this concept will be unchanged also in 2013

After three successful rallies since 2010 we will have some small modifications in implementation and evaluation. The safety aspect is further enhanced and the accompanying tourist group will be shared in two groups, based on their interests:

The special stages with a balanced mix of pists, rapid sand passages and dune crossings sets high standards also to ambitious rally drivers.

But also newcomers with serial vehicles will be able to finish the daily stages. That will work by the appropriate exit opportunities before particularly difficult sections. Basic knowledge of driving off road are sufficient for participation. From this year, the valuation of the driving time to the exit will lead to a more differentiated evaluation result.

As a complement to the actual rally first time two guided travel groups will accompany us. Participants which do not like to fight for placements can experience the event here. In addition to breathtaking landscapes and cultural sights adventure and team spirit stand in the foreground. In the first group the focus is next to a small dune driving school especially on seeing the sights and culture of the country. And in the other group it goes about driver training in dunes, the use of GPS and trip master and individual driving by using the road book. One thing is valid for the participants of both groups: Individual travel experiences combined with the advantages of professional rally logistics like emergency doctor, catering, refuel and workshop service are an unbeatable advantage of our concept!

We look forward to you and a great rally.

Jörg Schumann



TINETABLE

Date	km	place/night stay
25/10		technical acceptance
26/10		departue from Genua Tanit
27/10	375	Tunis – Gafsa Hotel Jugurtha Palace
28/10	410	Gafsa – Ksar Ghilane Campment Le Paradis
29/10	335	Ksar Ghilane – El Borma Camp Oasis
30/10	230	El Borma I
31/10	230	El Borma II
01/11	400	El Borma – Douz Hotel Touareg
03/11	280	Douz – Ksar Ghilane Campment Le Paradis
04/11	200	Ksar Ghilane I
05/11	185	Ksar Ghilane II
06/11	175	Ksar Ghilane – Kebili Hotel Yadis Oasi
07/11	465	Kebili – Hammamet Hotel Le Sultan
08/11	75	Hammamet – Tunis Tanit
09/11		arrival at Genua

REGISTRATION FEE

Vehicle bis zum	standard bookers until 31/07/2013	late bookers 31/08/2013	late entry may be possible
Enduro (incl. driver)	1990 €	2190 €	2410 €
Quad / ATV (incl. driver)	2200 €	2420 €	2665 €
Endurogespann (incl. 2 pers.)	3150 €	3465 €	3810 €
Buggy / GW (incl. 2 pers.)	3950 €	4345€	4780 €
Truck up to 5,99 m (incl. 2 pers.)	5100 €	5610 €	6170 €
Truck 6 m - 6,99 m (incl. 2 pers.)	5500 €	6050 €	6655 €
Truck 7 m - 8,99 m (incl. 2 pers.)	6100 €	6710 €	7380 €
Car trailer additional	425 €	465 €	515 €
Truck trailer up to 5,99 m	2490 €	2740 €	3015 €
Truck trailer 6m - 7,99 m	2990 €	3290 €	3615 €
each add. meter (until 2.10m hight)	175 €	195 €	215 €
each add. meter (from 2.11m hight)	350 €	390 €	430 €
each additional person	875€	960 €	1055 €
Adventureclass (tourism group)	-10%	-10%	-10%
Servicevehicle / -personnel	-15%	-15%	-15%
Accommodation in a single room	100 €	110 €	120 €
Ferry passages per person	275 €	295 €	320 €

CATEGORIES

The vehicle categories of the Rally El Chott:

- E1 Enduro (1-Cylinder)
- E2 Enduro (2-Cylinder)
- E3 Enduro with side-cars
- E4 Quads / ATVs
- BU Buggys / Side by Side (up to 999 kg emptyweight)
- CS Off-Road-Cars (production cars)
- CM Off-Road-Cars (upgraded)
- CP Off-Road-Cars (Open performance class)
- TL Trucks to 7,49 t empty-weight
- TH Trucks from 7,5t empty-weight
- AC Adventure Class (all types of vehicles incl. historical vehicles)

The registration-fee includes: The entry-fee, the ferry-passage Genova-Tunis and Tunis-Genova for the vehicle, all hotel-stays in double-rooms incl. half-board, Campsite-stays incl. half-board, sattelite-based tracking system (Exp-lona) with alert-function for emergency-spotting for all competitors vehicles, GPS data recorder for recording tracks, allowance of medical care, allowance of fuel supply / Enduro-refuelling stations, allowance of technical support, allowance of salvage truck(s), award-giving-ceremony at the last day of the event with cups for ranks one to three in each class and fort he winners of each group and the team-evaluation. Each participant will receive a certificate.

The price for the ferry includes: The ferry-passages Genova-Tunis and Tunis-Genova in 2-Bed-cabin incl. dinner and breakfast.



TUNISIA

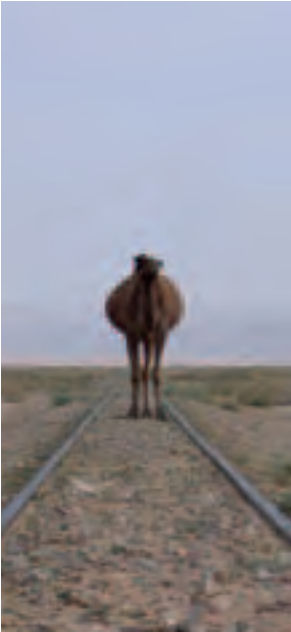
Tunisia is located on the Mediterranean coast of North Africa, 130 kilometers southwest of Sicily and 160 km south of Sardinia. The landscape is very varied: Cliffs on the north coast and deep forests in the inland, fertile valleys, sandy and stony deserts, rough mountains and salty lowland. South of Gafsa and Gabes begins the Sahara. As the gateway to the Sahara desert the small city Douz is called, from which it continues south to the picturesque oasis of Ksar Ghilane. Almost on the Algerian border is located near El Borma the most southern camp of our journey.

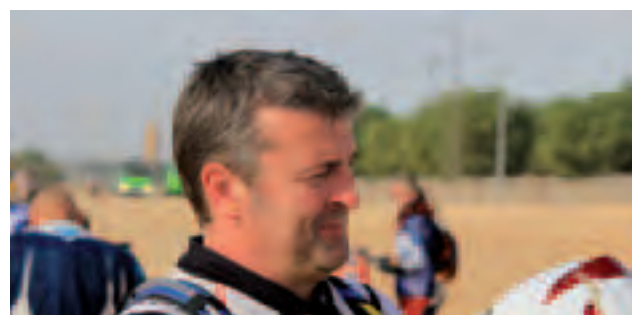


tracking system –
safety for all
participants

explona





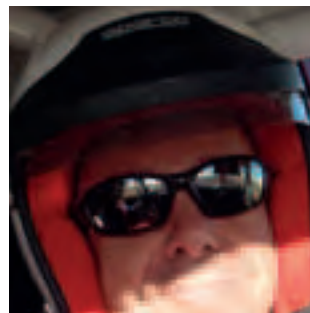


30 years of experience in desert taught us any time the same: The Sahara will not let you go again. The varied experiences in the most beautiful desert of the world always conjure a smile into the faces of the participants and the many volunteers of the organization. The deep satisfaction, to have completed the adventure ElChott, will bring you to smile also at home, again and again.



PEOPLE







Desert Rally



Motorcycle, Quad, ATV, Side-by-side, passenger car or truck, Land Rover, Mercedes, Toyota, Mitsubishi, Hummer, Jeep and VW, Magirus, MAN, Unimog or IFA, nearly all brands have passed their test in the desert already.

Whether used the vehicle in production-standard or as a rally prototype, the fun of the adventure is always in the foreground.







CAMP

Let yourself be pampered in the exclusive Tunisian hotels. Just sit comfortably in the hotel lobby and discuss the race. Or sit around the campfire, watching the sunset behind the dunes and enjoy the incredible camaraderie among adventurers. - Both are part of our concept. We want to travel not only by Tunisia, but also experience the great nature of the country firsthand.



5X HOTEL





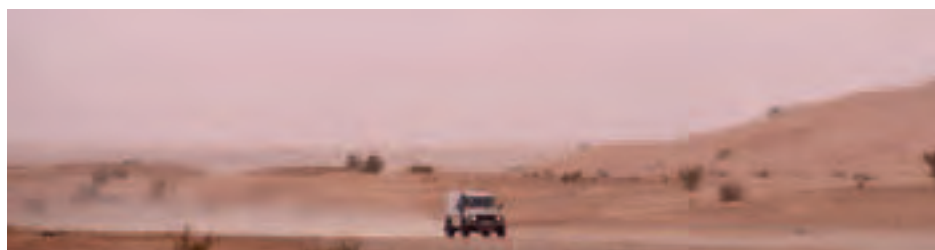
2X FERRY



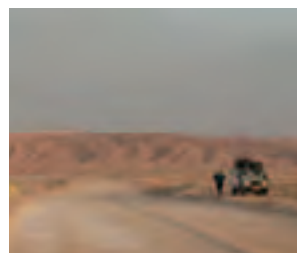
TX OUTSIDE CAMP



3 300 KM
TUNING



2 250 KM
SPECIAL STAGES



RANGER DEALER OF THE YEAR 2011



POLARIS

WARTUNG | VERKAUF | TUNING | UMBAU | RACING



HAUPTSTRASSE 5
56291 FALZFELD
WWW.ASS4X4.DE





TRACKS

3,300 kilometers lead us through the beautiful landscapes of Tunisia. From Tunis, the big and vibrant African city, past the sandy beaches of the Mediterranean Sea up to the last outpost on the Algerian border middle of the Sahara. 2,250 kilometers of the total distance are special stages. This kilometers will bring individual offroad- and rally-feeling and moments of enthusiasm to all participants. Images that imprint themselves. Moments of camaraderie that you will never forget.





Reise oder Rallye?
Inland oder Finnland?
München oder Marrakesch?
Wir bauen Ihr Fahrzeug...



Fahrwerke, Dachzelte, Zubehör, Umbau, Online-Shop, Werkstatt



Schnell aber Sicher???

Rallyeservice, Gepäcktransport,
Rundumbetreuung?

Rufen sie uns an...

0049(0)3385-57190

oder per Mail: elchott@daktec.de



DAKTEC.de

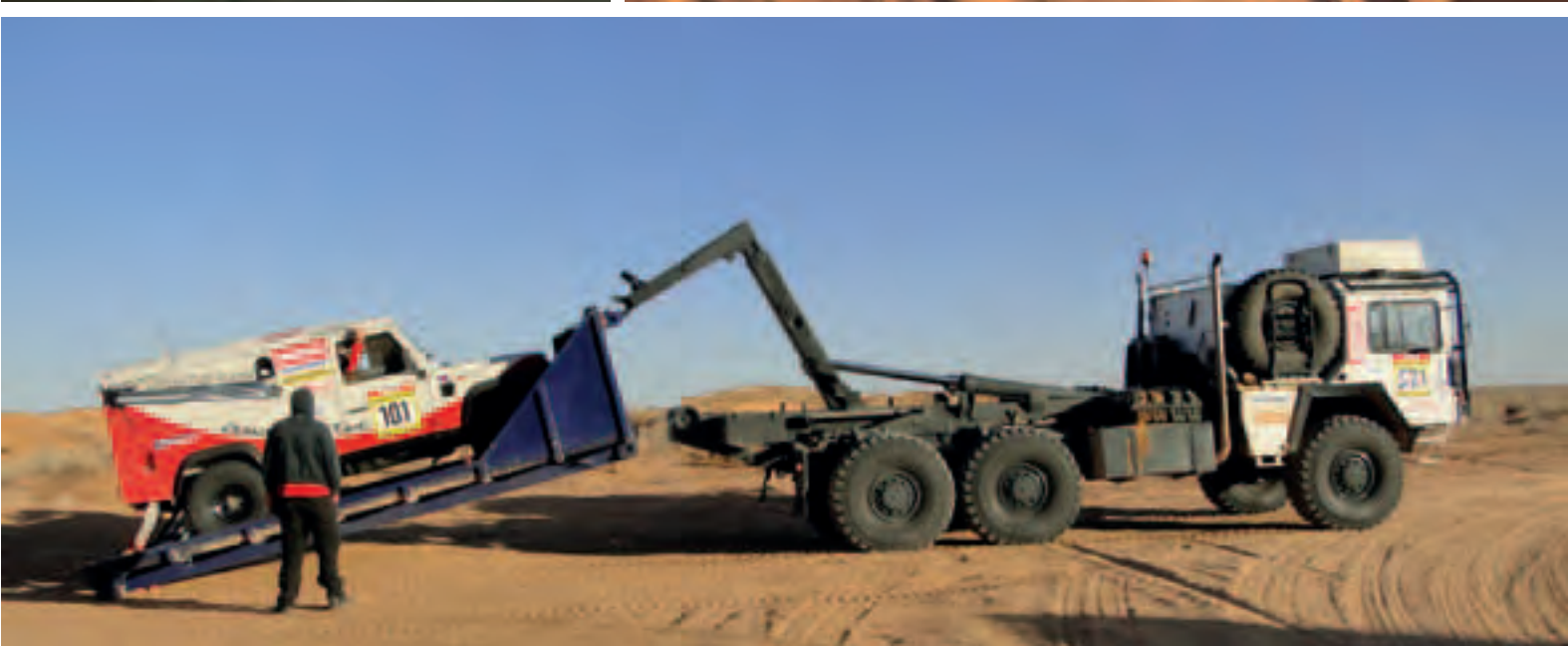
...die Offroad-Company

14712 Rathenow, Götliner Straße 14-15, Tel 0049(0)3385/57190
per mail: info@daktec.de Offen: Mo-Fr 7.00-18.00 Sa 8.00-12.00



SERVICE

Service and safety for all participants at our events have uppermost priority. Whether small defects on the vehicle, transportation of broken vehicles from the dunes, or assistance in operation of navigation equipment, the team of the organization is working around the clock. From Genoa to Genoa, everyone can trust the experience and the knowledge of the EICott-staff. And last but not least, the emergency medical teams and paramedics provide at any time a professional medical coverage for all participants of the rally.



25 / 10 - 9 / 11 / 2013

SAHARA

ADVENTURE

TOURIST RALLY PARTICIPATION

MARATHON
RALLY

TECHNICAL
SERVICE

MEDICAL
CARE

Your local contact:



CS-MOTORSPORT

Jörg Schumann

Gabelsberger Str. 18

D - 08412 Werdau

+49 3761 762492

+49 172 3505738

js-motorsport@t-online.de

www.ElChott.com